

Research article

Open Access

Analysis of four *achaete-scute* homologs in *Bombyx mori* reveals new viewpoints of the evolution and functions of this gene family

Qingxiang Zhou¹, Tianyi Zhang², Weihua Xu², Linlin Yu¹, Yongzhu Yi¹ and Zhifang Zhang^{*1}

Address: ¹The Biotechnology Research Institute, National Engineering of crop germplasm and genetic improvement, Chinese Academy of Agricultural Sciences, Beijing, 100081, China and ²State Key Laboratory for Biocontrol and Institute of Entomology, School of Life Sciences, SUN YAT-SEN University, Guangzhou 510275, China

Email: Qingxiang Zhou - Qingxiang_Zhou@meei.harvard.edu; Tianyi Zhang - Tianyi_Zhang@meei.harvard.edu; Weihua Xu - Xuweihua@mail.sysu.edu.cn; Linlin Yu - Linlinyu1983@126.com; Yongzhu Yi - Yongzhuyi62@yahoo.cn; Zhifang Zhang* - Zhifangzhang@yahoo.com

* Corresponding author

Published: 6 March 2008

Received: 12 October 2007

BMC Genetics 2008, 9:24 doi:10.1186/1471-2156-9-24

Accepted: 6 March 2008

This article is available from: <http://www.biomedcentral.com/1471-2156/9/24>

© 2008 Zhou et al; licensee BioMed Central Ltd.

This is an Open Access article distributed under the terms of the Creative Commons Attribution License (<http://creativecommons.org/licenses/by/2.0>), which permits unrestricted use, distribution, and reproduction in any medium, provided the original work is properly cited.

Abstract

Background: *achaete-scute* complexe (AS-C) has been widely studied at genetic, developmental and evolutionary levels. Genes of this family encode proteins containing a highly conserved bHLH domain, which take part in the regulation of the development of central nervous system and peripheral nervous system. Many AS-C homologs have been isolated from various vertebrates and invertebrates. Also, AS-C genes are duplicated during the evolution of Diptera. Functions besides neural development controlling have also been found in *Drosophila* AS-C genes.

Results: We cloned four *achaete-scute* homologs (ASH) from the lepidopteran model organism *Bombyx mori*, including three proneural genes and one neural precursor gene. Proteins encoded by them contained the characteristic bHLH domain and the three proneural ones were also found to have the C-terminal conserved motif. These genes regulated promoter activity through the Class A E-boxes *in vitro*. Though both *Bm*-ASH and *Drosophila* AS-C have four members, they are not in one by one corresponding relationships. Results of RT-PCR and real-time PCR showed that *Bm*-ASH genes were expressed in different larval tissues, and had well-regulated expressional profiles during the development of embryo and wing/wing disc.

Conclusion: There are four *achaete-scute* homologs in *Bombyx mori*, the second insect having four AS-C genes so far, and these genes have multiple functions in silkworm life cycle. AS-C gene duplication in insects occurs after or parallel to, but not before the taxonomic order formation during evolution.

Background

Transcriptional factors of the bHLH (basic helix-loop-helix) family play important roles in the development of metazoan, taking part in the regulation of neurogenesis, myogenesis, haemopoiesis and so on [1-5]. The *achaete-*

scute complex (AS-C), a group of four bHLH genes, has been found to be involved in the determination of *Drosophila* neural precursors [6-9].

AS-C proteins interact with another bHLH protein Daughterless (Da) to form a dimer, and bind Class A E-boxes CAGG/CTG [10]. AS-C/Da heterodimers' binding sites were found in the upstream regions of *hunchback* (*hb*) [10] and *phyllopod* (*phyl*) [11]. In *Drosophila*, they were also found in the upstream region of *ac* itself, and required for auto- and cross-regulation by *ac* and *sc* [12].

The main functions of AS-C genes are regulating the formation and patterning of precursors of central nervous system (CNS) and peripheral nervous system (PNS). During neural development, AS-C genes are expressed in one or more cells within the proneural clusters, which are committed to the neural precursor fate, and the remaining cells in the cluster differentiate to be epidermal cells or are eliminated by apoptosis [8,13,14]. *Tribolium castaneum* ASH (*Tc*-ASH) and *Hydra vulgaris* cnidarian ASH (*Cn*-ASH) show similar functions during the formation of sensory organs in the transgenic *Drosophila* [15,16]. Also, it was found that Cn-ASH protein formed heterodimers with *Drosophila* Da (Dm-Da) protein *in vitro*, and these dimers specially bound to the consensus E-boxes [15]. Besides regulation of neurogenesis, AS-C genes have other functions. *ac* takes part in the development of Malpighian tubule by expressing in the tip cell and regulating the sequential fates of the organ [17]. *sc* regulates sex determination by its different expression dosage between females and males, but neither *ac* nor *l'sc* can substitute for *sc* in this function [18-20]. *l'sc* expression is necessary for muscle founder cells segregating from the somatic mesoderm. Loss of expression of *l'sc* leads to a loss, whereas over expression causes a duplication of muscles and founder cells [21].

According to the sequence and functional analysis in different species, AS-C genes are conserved during evolution. The four genes of *Drosophila* AS-C are *achaete* (*ac*), *scute* (*sc*), *lethal of scute* (*l'sc*) and *asense* (*ase*). The former three are defined as proneural genes and the last one as neural precursor gene, basing on their expression patterns and functions in proneural clusters. AS-C homologs have been isolated from various invertebrates and vertebrates [15,16,22-34]. They all have a conserved bHLH domain and some of them also have a conserved C-terminal motif. Gene duplication events caused a dramatic increase of AS-C gene number during Arthropoda evolution [16,30]. Within Insecta, AS-C homologs have been studied in Diptera (flies and mosquitoes), Hymenoptera (bees), Coleoptera (the red flour beetle) and Lepidoptera (the butterfly *P. coenia*). Each of the insects has one *ase*-like gene. Most of them have only one proneural gene, while the medfly *Ceratitis capitata* has two, and the fruit fly has three. The four genes in *Drosophila* were believed to have arisen from a single ancestral gene by three independent duplication events [16,30]. AS-C homologs in the insects studied are

closely linked in the chromosome, for example, the four AS-C genes comprising about 100 Kb in *Drosophila*, and the two residing about 22 Kb apart in *Anopheles*, about 55 Kb apart in *Tribolium*, and about 40 Kb apart in *Apis* [16,34].

The silkworm, *Bombyx mori*, is a model organism of Lepidoptera. With the completion of silkworm genomic sequencing project [35], *Bombyx mori* is emerging as an important model lepidopteran. Only one AS-C homolog had been isolated from lepidopteran in previous studies [26]. In the present study, we found there were four AS-C homologs in silkworm, three proneural genes and an *ase*-like one. We detected the transcriptional activity of the genes by transient expression in Bm-N cells. Expression profiles of the genes in different tissues and expression changes during the development course of silkworm embryo and wing disc/wing were also studied.

Results

Isolation and identification of *achaete-scute* homologs in *Bombyx mori*

It is well known that each *achaete-scute* homolog has a highly conserved bHLH domain which distinguishes them from other bHLH proteins. Using the amino acid sequence of *Drosophila* Ac (Genbank: [AAF45498](#)) to blast the silkworm EST database (see Materials and Methods section), we obtained an EST sequence (GenBank: [CK537057](#)) encoding a conserved AS-C bHLH domain. Primers were designed based on the EST sequence, and RACE assay was carried out using the midgut total RNA of 3d 5th instar larva as the template. After sequencing and assembling, we gained a cDNA of 1,332 bp and named it *Bm*-ASH1 (Genbank: [DQ350889](#)). *Bm*-ASH1 gene contains a 582 bp ORF region (including the stop codon) and encodes a 193 aa protein.

Then we screened the *Bombyx mori* genome database using the 193 aa Bm-ASH1 protein sequence, and found genes with conserved AS-C bHLH region in four more contigs (Genbank: [AADK01030307](#), [AADK01036667](#), [AADK01011379](#) and [BAAB01105243](#)), besides the two (Genbank: [AADK01005140](#) and [BAAB01089921](#)) corresponding to *Bm*-ASH1. [BAAB01105243](#) is part of [AADK01011379](#). Each of them contained a deduced ORF region, and then we cloned the ORF regions by RT-PCR methods and they were sequenced. Primers for 3'-RACE were designed basing on the sequences of the ORF regions, and 3'-RACE assay was processed using the total RNA from 1 d pupal wing as the template. The segments gained by 3'-RACE were sequenced and assembled with each corresponding ORF sequence. The final cDNA sequences were 1,449 bp, 990 bp and 1,695 bp long, and were named *Bm*-ASH2 (Genbank: [EF620927](#)), *Bm*-ASH3 (Genbank: [EF620928](#)) and *Bm*-ase (Genbank: [EF620929](#))

respectively. *Bm-ASH2* gene contained a 720 bp OFR region (including the stop codon) and encoded a 239 aa protein, *Bm-ASH3* gene contained a 726 bp OFR region (including the stop codon) and encoded a 241 aa protein, and *Bm-ase* gene contained a 1,215 bp OFR region (including the stop codon) and encoded a 404 aa protein.

Alignment results with *Drosophila* AS-C proteins showed that all four proteins encoded by *Bm-ASH* genes contained the AS-C characteristic one basic and two helix domains flanking a non-conserved loop domain (Fig. 1). *Bm-ASH1*, *Bm-ASH2* and *Bm-ASH3* also had the C-terminal 16–17 aa conserved motif, but *Bm-Ase* did not. There

was a highly conserved short motif (SPxxS, x means uncertain acid amino) around the region of PEST domain [36–38]. In the bHLH region, *Bm-ASH1* shares 74.6%, *Bm-ASH2* shares 72.1% and *Bm-ASH3* shares 72.1% amino acid identity with *Dm-L'sc*, and *Bm-Ase* shares 74.3% with *Dm-Ase* (Table 1). The data above indicate that *Bm-ASH1*, *Bm-ASH2* and *Bm-ASH3* are proneural genes and *Bm-ase* an *asense* homolog.

We compared the sequences of ASH proteins from silk-worm and some other insects, and found that either at whole amino acids level or within the bHLH region, *Bm-ASH1* had a higher identity with non-lepidopteran insects'

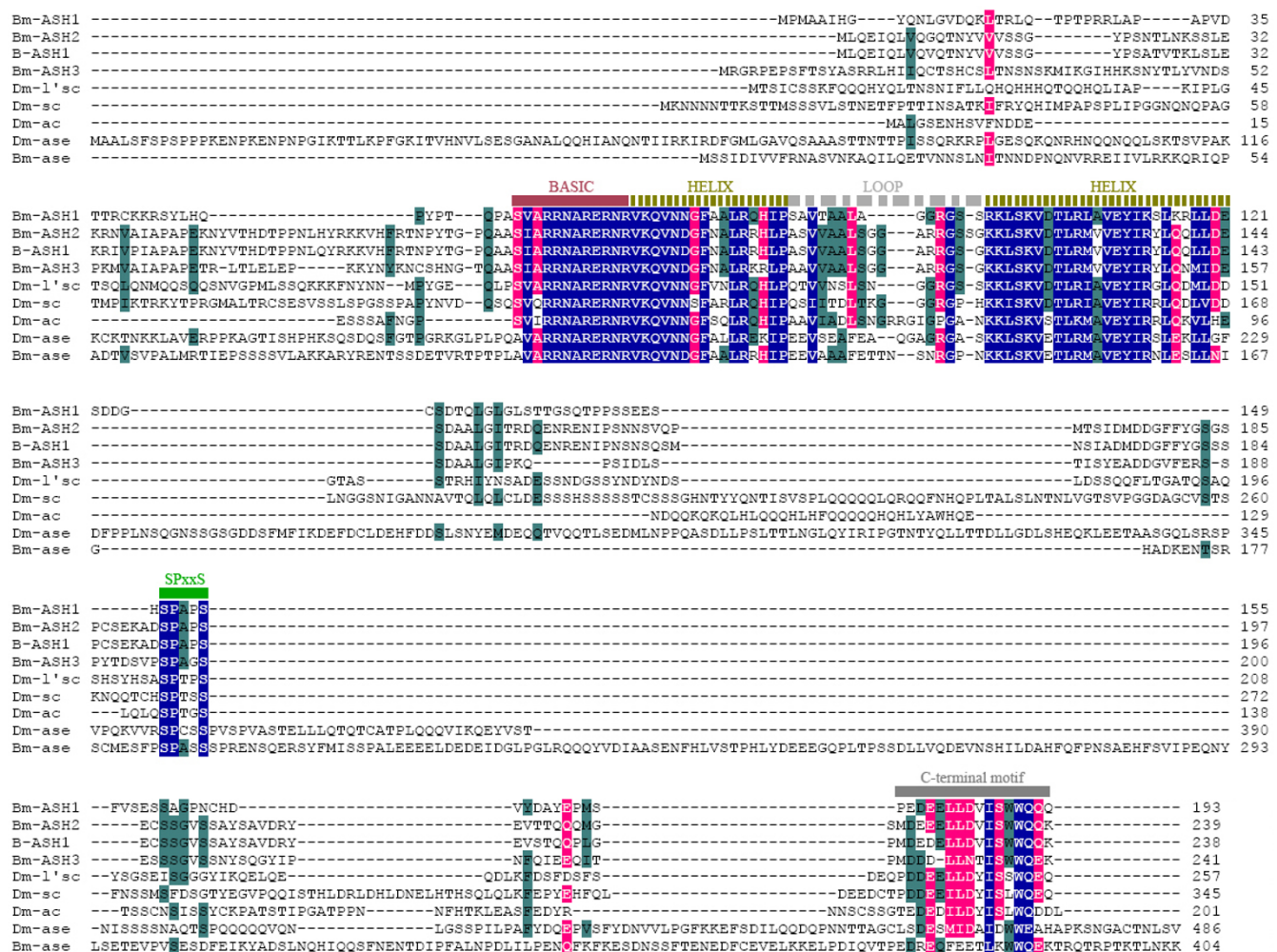


Figure 1

Alignment of the amino acid sequences of proteins encoding by *Bm-ASH*, *B-ASH1* and *Dm AS-C* genes. All of the proteins contain the AS-C characteristic one basic and two helix domains flanking a non-conserved loop domain, and a conserved C-terminal 16–17 aa motif also exists in each of the proneural genes but neither of the *asense* genes. Moreover, a conserved short motif SPxxS is also found in all of the investigated proteins. Amino acids that are similar in 100% of aligned sequences are shaded blue, in more than 80% but less than 100% with pink, and in more than 60% but less than 80% with dark-green.

Table 1: Homology comparison of proteins encoded by the Bm-ASH genes with other insect ASH proteins.

ASH name	Percent Identity (%)			
	Bm-ASH1	Bm-ASH2	Bm-ASH3	Bm-Ase
Bm-ASH1	/			
Bm-ASH2	71.6 (44.6)	/		
Bm-ASH3	70.1 (36.8)	91.3 (49.8)	/	
B-ASH1	73.1 (38.9)	100.0 (90.3)	91.3 (47.9)	66.7 (26.5)
Ag-ASH	79.1 (47.7)	70.6 (34.3)	70.6 (30.7)	67.6 (19.7)
Am-ASH	77.6 (50.8)	67.1 (32.2)	63.8 (26.1)	68.6 (25.8)
Dm-Ac	68.7 (31.6)	65.7 (28.9)	65.2 (30.3)	60.0 (28.4)
Dm-Sc	68.7 (42.0)	62.3 (27.2)	58.0 (27.4)	59.4 (21.2)
Dm-L'sc	74.6 (40.9)	72.1 (31.0)	72.1 (36.9)	61.8 (27.2)
Tc-ASH	76.1 (46.6)	62.9 (34.3)	63.8 (26.1)	67.1 (28.1)
Bm-Ase	67.2 (31.1)	62.9 (30.1)	60.9 (27.0)	/
Ag-Ase	68.7 (30.1)	54.3 (20.9)	56.5 (21.6)	71.4 (22.0)
Am-Ase	73.1 (38.9)	68.8 (26.8)	62.5 (23.7)	71.9 (24.9)
Dm-Ase	70.1 (37.8)	57.1 (23.0)	60.9 (24.5)	74.3 (24.0)
Tc-Ase	70.1 (36.8)	63.2 (25.1)	58.8 (26.1)	77.9 (33.5)

The number in the bracket is the identity percent between two whole protein sequences, and the number before the bracket is the identity percent within the bHLH regions.

ASH proteins than the other two *Bombyx* proneural proteins, Bm-ASH2 and Bm-ASH3 (Table 1). Among the silkworm ASH proteins, Bm-ASH2 and Bm-ASH3 are most identical, showing 91.3% identity within the bHLH region. It is surprising that Bm-ASH2 and butterfly Achaete-scute homolog1 (B-ASH1) [26] are the same within the bHLH region and share 90.3% identity at the whole amino acid level. Bm-Ase shares more than 70% identities with all of the other insect Ase proteins within the bHLH region. In phylogenetic analysis, proneural proteins and Ase proteins were grouped into two separate clades (Fig. 2). In the proneural clade, Bm-ASH1, Dm-L'sc, Ag-ASH, Am-ASH, and Tc-ASH were grouped into one sub-clade, paralleling the other two sub-clades, one comprised of Dm-Ac and Dm-Sc and the other comprised of Bm-ASH1, Bm-ASH2 and B-ASH1.

The *Bombyx* ASH genes could not be assembled into a complex based on current data

cDNA sequence of each *Bombyx* ASH gene was used to blast the silkworm knowledgebase [39], and four separate scaffolds were screened out. The total length of the scaffolds is about 122 Kb (but we could not assemble them into one complex with the present data). Analysis results showed that there was an intron outside of the ORF region in Bm-ASH1 and Bm-ASH2, however there was no intron in either Bm-ASH3 or Bm-ase (Fig. 3).

Bm-ASH genes regulating promoter activity via E-box in Bm-N cells

AS-C genes have self-regulating functions by E-boxes in their promoter regions [12]. We cloned a 1,178 bp DNA fragment upstream of the ORF region of the Bm-ASH2 gene. At positions 188–194 bp and 791–797 bp upstream of ATG codon, there are two Class A E-boxes (CAGG/CTG). The promoter segments were cloned into pGL3-Basic vector with a luciferase reporter gene, and Bm-ASH and *da* genes were cloned into the modified transient expression vector pBacPAK8-ie1-hr3 [40]. Recombined plasmids were co-transfected into Bm-N cells by different assorted ways. We found that the promoter had no activity without the co-transfection of Bm-ASH or *da* genes' transient expression vectors (Fig. 4). The promoter had a significantly higher activity by co-transfection with Bm-ASH1 and the *da* genes' transient expression vectors than by other co-transfections. Besides, the promoter activity was weaker when it was only co-transfected into cells with Bm-ASH genes than when also with *da* (ex., promoter activity of ASH2P+ASH1 was weaker than that of ASH2P+ASH1+*da*, Fig. 4).

In order to study whether the bHLH transcriptional factors regulate the promoter by the E-box region, we changed one or both of the deduced E-boxes to "aAGG/CcG" by site-directed mutation (Fig. 5A). Then the mutated promoters were cloned into pGL3-Basic vector as described above, and co-transfected Bm-N cells with each Bm-ASH and *da* genes' transient expression vectors, respectively. The results showed that E-box mutation significantly reduced the activity of the promoter when co-transfected with silkworm proneural genes (Fig. 5B, C, D; $p < 0.01$). However, the activation of Bm-ase did not seem to be related with either of the two deduced E-boxes (Fig. 5E; $p > 0.05$). These data suggest that proteins encoded by Bm-ASH genes have similar functions to the AS-C transcriptional factors in *Drosophila*, and they synergize with Da protein.

Expression distribution of *Bombyx* ASH genes in larval tissues

To understand the potential in vivo regulations of ASH genes, we detected the expression status of *Bombyx* ASH genes in different tissues of the 5th instar larvae on the 3rd and the 8th days (just after spinning) (Fig. 6). The data showed that Bm-ASH1 and Bm-ASH2 were expressed in organs derived from all the three cellular derms: ectoderm, mesoderm and endoderm; whereas Bm-ASH3 and Bm-ase were only expressed in tissues derived from ectoderm and mesoderm. Bm-ASH1 was expressed in all organs except silk glands (S-G) and hemocytes (He), and at a low level in 5 d and had no expression in 8 d fat body (FB). Bm-ASH2 was widely expressed in all the investigated samples. The expression of Bm-ASH3 and Bm-ase

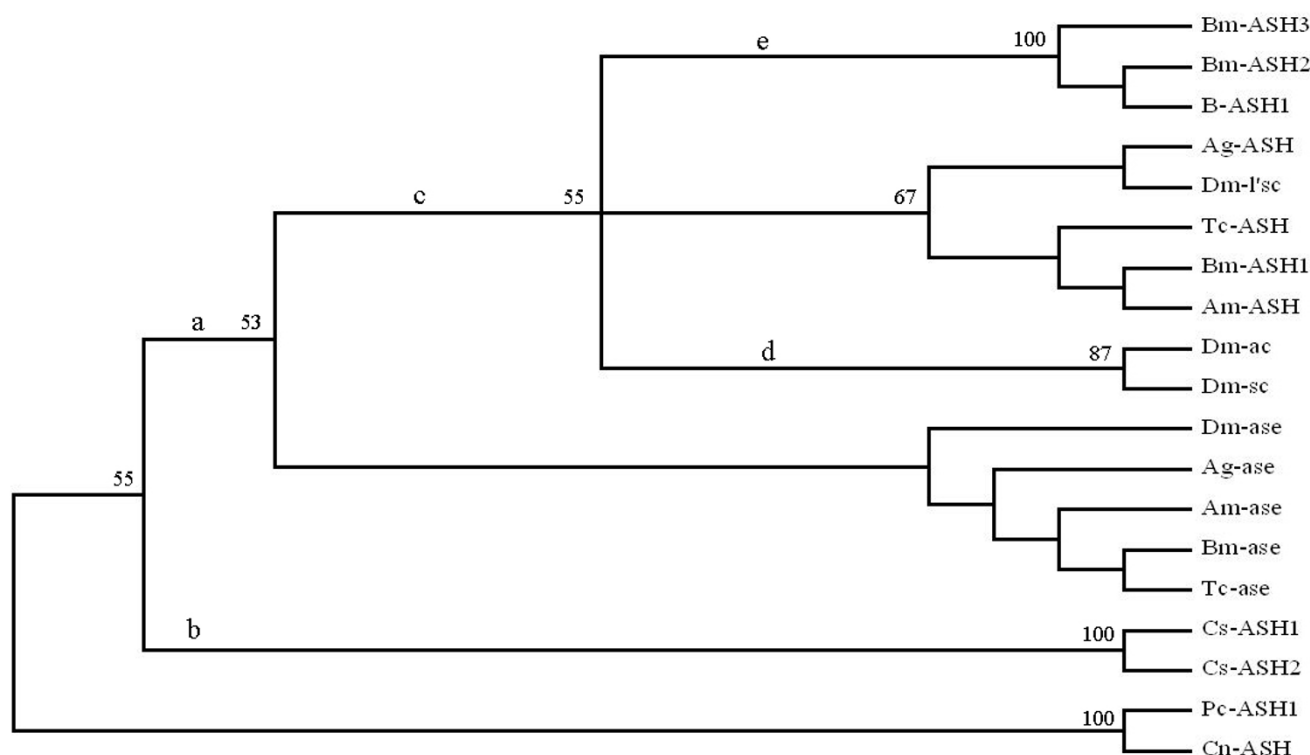


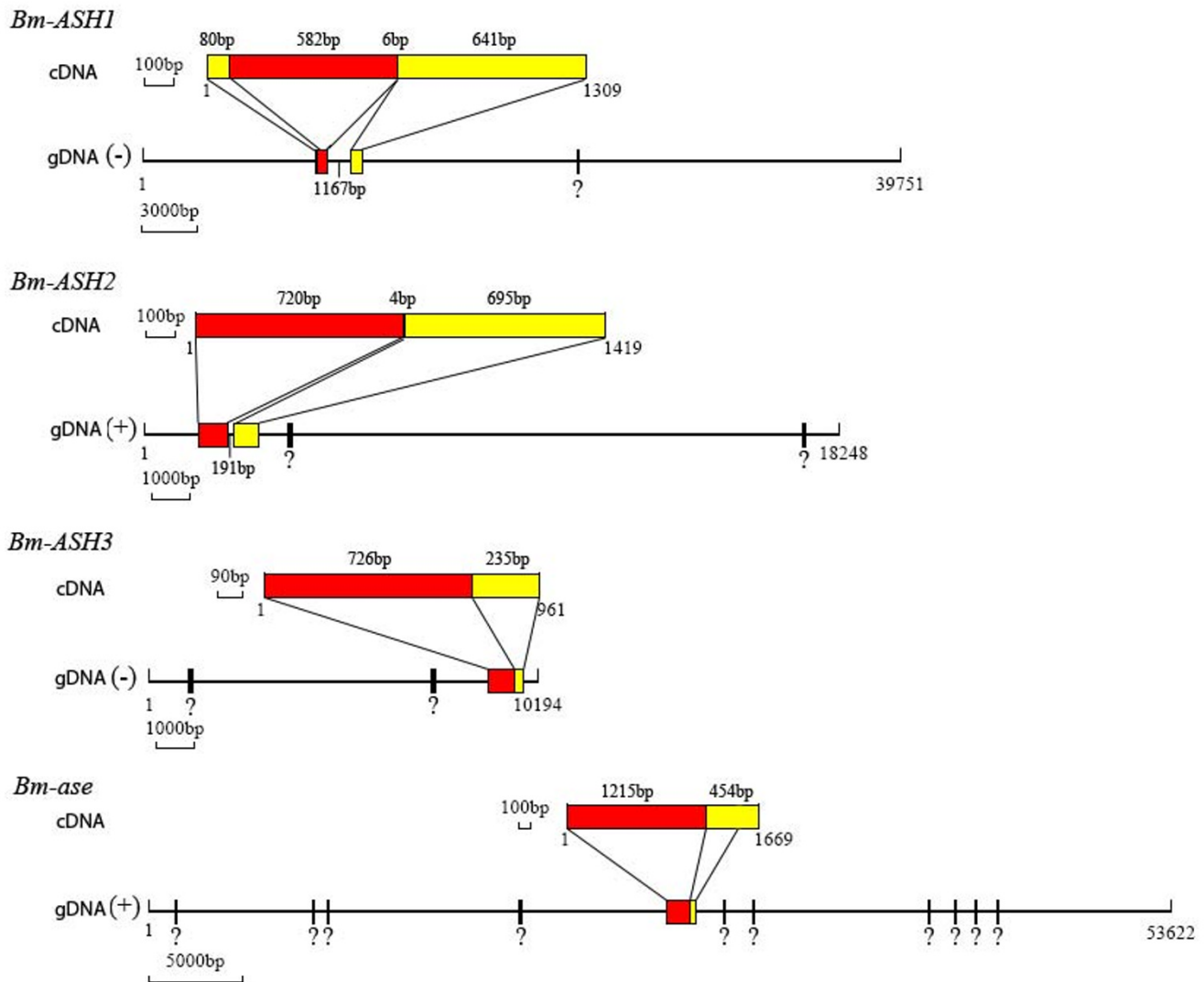
Figure 2

Phylogenetic status of silkworm ASH proteins in insect. The support values are given at each node (100 replications). Branch lengths are not drawn to scale. Letters upside of the branch lines show the duplication events as clarified by Wheeler et al. [16] (see discussion for detailed description). It is obvious that all of the Asense proteins are grouped to one clade and the proneural genes are grouped to another within the insect group. Bm-ASH2 and Bm-ASH3 are grouped to a sub-clade parallel the one which Bm-ASH1 is sorted in. Ag-ASH, *Anopheles gambiae* Achaete-Scute homolog (Genbank: [AAK97461](#)); Am-ASH, *Apis mellifera* Achaete-Scute homolog (Genbank: [XP_393665](#)); B-ASH1, *Butterfly* (Genbank: [Precis coenia](#)) Achaete-Scute homolog 1 (Genbank: [AAC24714](#)); Bm-ASH1, *Bombyx mori* Achaete-Scute homolog 1 (Genbank: [NP_001037416](#)); Bm-ASH2, *Bombyx mori* Achaete-Scute homolog 2 (Genbank: [EF620927](#)); Bm-ASH3, *Bombyx mori* Achaete-Scute homolog 3 (Genbank: [EF620928](#)); Cn-ASH, *Hydra vulgaris* cnidarian Achaete-Scute homolog (Genbank: [U36275](#)); Cs-ASH1, *Cupiennius salei* Achaete-Scute homolog 1 (Genbank: [CAC27516](#)); Cs-ASH2, *Cupiennius salei* Achaete-Scute homolog 2 (Genbank: [CAC27517](#)); Dm-ac, *Drosophila melanogaster* Achaete (Genbank: [AAF45498](#)); Dm-sc, *Drosophila melanogaster* Scute (Genbank: [AAF45499](#)); Dm-l'sc, *Drosophila melanogaster* Lethal of scute (Genbank: [AAF45500](#)); Pc-ASH1, *Podocoryne carnea* Achaete-Scute homolog 1 (Genbank: [AAN85110](#)); Tc-ASH, *Tribolium castaneum* Achaete-Scute homolog (Genbank: [AAQ23386](#)); Ag-ase, *Anopheles gambiae* Asense (Genbank: [AAAB01008963](#)); Am-ase, *Apis mellifera* Asense (Genbank: [XP_393664](#)); Bm-ase, *Bombyx mori* Asense (Genbank: [EF620929](#)); Dm-ase, *Drosophila melanogaster* Asense (Genbank: [AAF45502](#)); Tc-ase, *Tribolium castaneum* Asense (Genbank: [AAQ23387](#)).

were more tissue specific, and the level of *Bm-ase* was relatively lower. *Bm-ASH1* and *Bm-ASH2* had high expression levels in gonads (G), while *Bm-ASH2* and *Bm-ASH3* had high expression levels in tracheal clusters (Tc). All of the data suggested that the four *Bm-ASH* genes might play various roles in the development of silkworm larva. We should note that all three proneural genes expressed highly in WD, and *Bm-ase* had a relatively higher expression level in 8 d WD. These implied that *Bm-ASH* genes might be important for the development of the wing disc.

Developmental changes of *Bombyx* ASH genes in the embryo and in the pupal wing

Functional genes play their roles by expression in special tissues and at special time. We detected the expression level of *Bombyx* ASH genes in the embryo and pupal wing in order to study the function of these genes during silkworm development. Total RNA was extracted from 1 d to 9 d embryos or from wings/wing discs (from spinning to the adult phase), and used for reverse transcription. cDNA synthesized from about 10 ng total RNA was taken as the template for each PCR reaction. We calculated the gene

**Figure 3**

Genomic structure of *Bm-ASH* genes. The red region stands for the ORF, and the yellow region stands for non-coding regions; gDNA stands for genomic DNA; (+) and (-) show the published genomic sequences [39] being forward or reverse compared with the cDNAs. "?" shows the region unsequenced. The 6 bp in *Bm-ASH1* indicates that there is a 6 bp uncoding region in the first exon of the gene just following the coding region, so is the 4 bp in *Bm-ASH2*. Genomic sequences are all from SilkDB [39]. The name of the genomic DNA fragment in *Bm-ASH1* is Scaffold002070, in *Bm-ASH2* is Scaffold007910, in *Bm-ASH3* is Scaffold013050, and in *Bm-ase* is Scaffold000880, respectively.

copy number corresponding to 10^3 *Bm-actin* A3 copies at each developmental point in the embryo and 10^6 in the wing/wing disc. The results showed that during the embryo development, both *Bm-ASH2* and *Bm-ase* had two expression peaks, one being both on 3 d, and the other being on 5 d for *Bm-ASH2* and on 6 d for *Bm-ase* (Fig. 7). However, there was only one peak for each of the other two *Bm-ASH* genes, *Bm-ASH1* on 5 d and *Bm-ASH3* on 4 d. Although the expression levels of *Bm-ASH3* showed a

peak from 3 d to 5 d, its expression level was always lower than the other three genes.

During the spinning (wandering) and pupal ages, the silkworm wing disc/wing form changes obviously by extension, turning and scale foundation. The results of quantitative RT-PCR showed that all four genes had relatively high expression levels from 0 d to 3 d pupae (Fig. 8). The result of *Bm-ASH1* was similar to our previous results [41]. *Bm-ASH1*, *Bm-ASH2* and *Bm-ASH3* all reached their

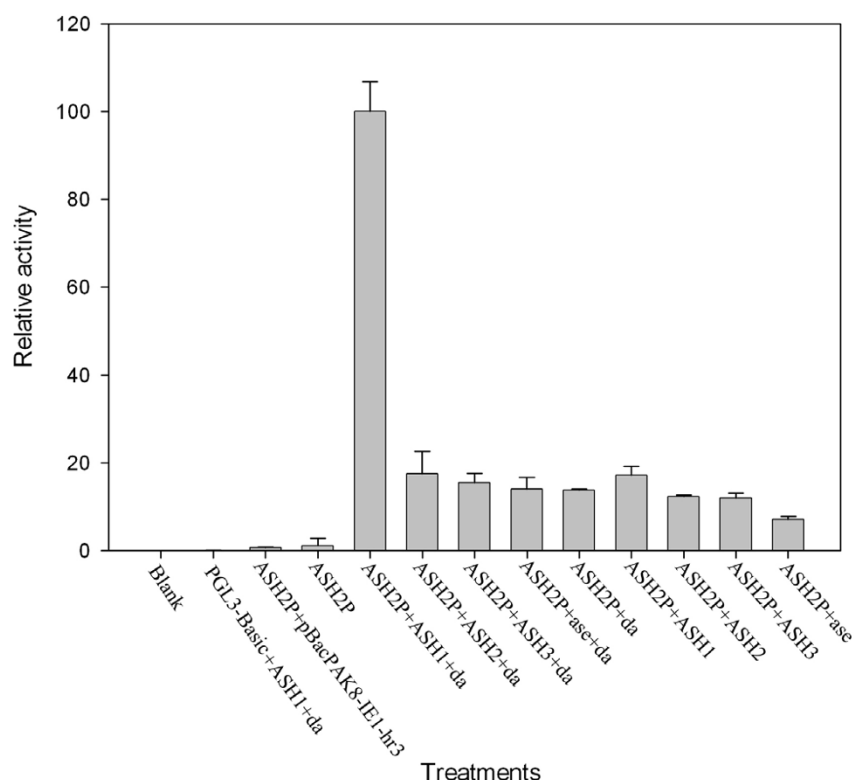


Figure 4

Activity analysis of ASH2P promoter by co-transfected with *Bm-ASH* genes. In the figure, ASH2P stands for the recombinant plasmid pGL3-Basic-ASH2P; ASH1, ASH2, ASH3, ase and da respectively stands for the modified transient expression vector pBacPAK8-iel-hr3 containing *Bm-ASH1*, *Bm-ASH2*, *Bm-ASH3*, *Bm-ase* and *Dm-da* (daughterless) ORFs as transcriptional factor genes. At least three independent repeats were carried out for each treatment.

peak values on P-1 d, whereas *Bm-ase* peaked one day later. Flanking these days, expression levels of the genes were significantly lower. During the spinning period, expressions of all four genes were at low levels, with *Bm-ase* being undetectable. It was notable that the expression levels of the three proneural genes decreased from S-0d to S-3d. *Bm-ASH3* and *Bm-ase* were not express anymore after P-3d pupa, while both *Bm-ASH1* and *Bm-ASH2* had a low but noticeable peak in 5 d pupa.

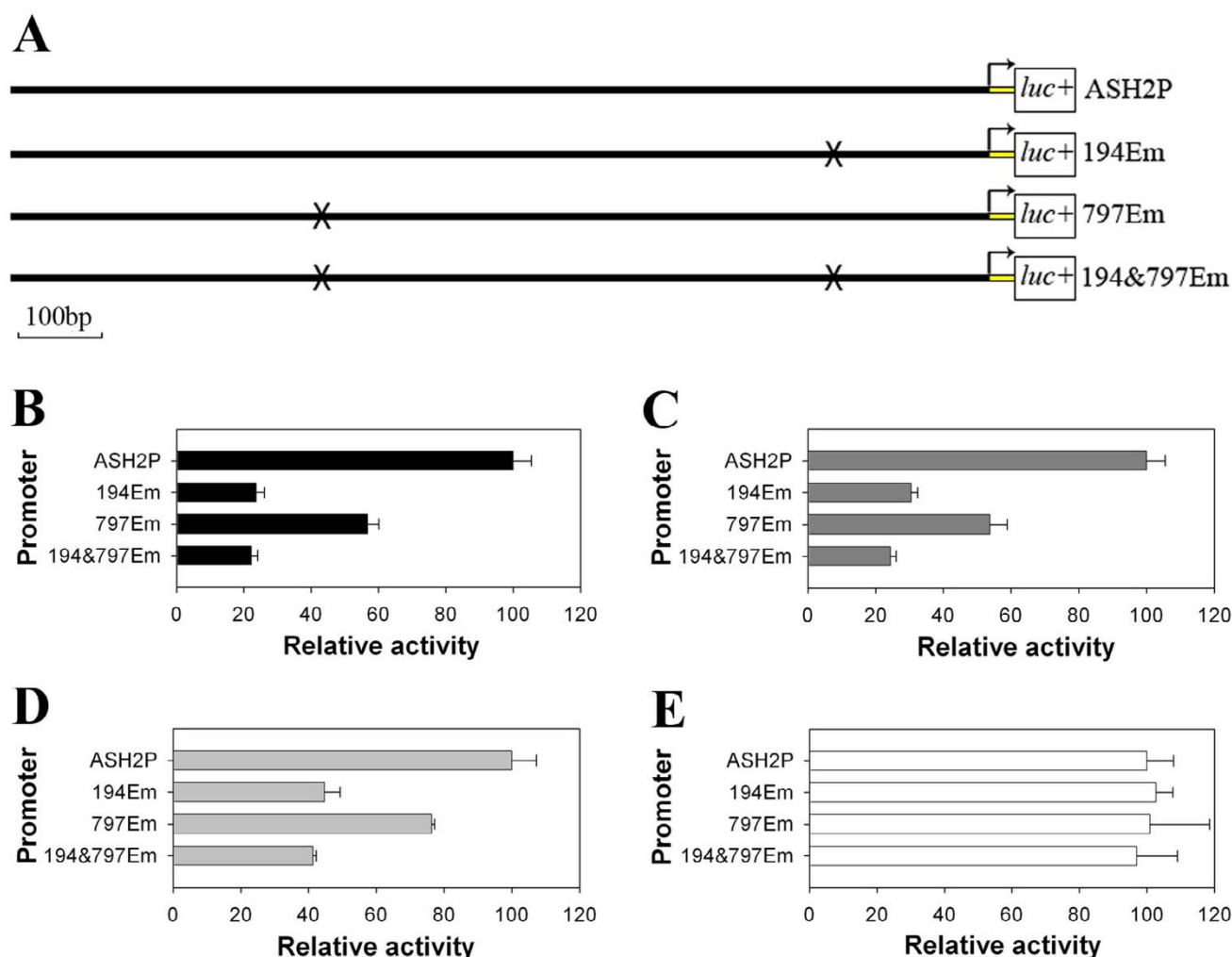
Discussion

Our results showed that there were four AS-C homologs in *Bombyx mori*: *Bm-ASH1*, *Bm-ASH2*, *Bm-ASH3* and *Bm-ase*. The first three were proneural genes, and the last one was a neural precursor gene. The proneural genes enhanced the activity of the *Bm-ASH2* promoter by binding its E-boxes in *Bm-N* cells, which was one of the AS-C homolog characteristics (Figs. 4 & 5). The four genes had various expression profiles in silkworm larval tissues (Fig. 6), and further studies showed that they have important roles during the development of the embryo and the wing (Fig. 7 & 8).

AS-C genes duplication in insects occurs after or parallel but not before the taxonomic order formation during evolution

Homologs of AS-C genes exist in various animals from low-grade coelenterate to high-grade mammals, including human being [30]. It has been proposed that AS-C gene has several independent duplication events in Arthropoda, resulting in the plasticity of the gene number. In this model, *Cn-ASH*, the AS-C homolog in *Hydra* is supposed as the ancestral one. Parallel but independent duplication events occurred in insects and chelicerates (Fig. 2,a & 2b). Within the Diptera two more duplication events happened during evolution. So the present most derived dipteran, *Drosophila melanogaster*, has the four AS-C genes *achaete*, *scute*, *lethal of scute* and *asense* [16,30]; while lower derived dipteran, such mosquito, has only two [31].

We found that there were four AS-C homologs in the silkworm, *Bombyx mori*, a model lepidopteran. Also, *Bombyx* is the only insect besides *Drosophila* found with four AS-C genes so far. Among the three proneural AS-C genes in *Drosophila*, *l'sc* is the most original one, which is more

**Figure 5**

Bm-ASH genes enhance ASH2P Promoter activity via E-boxes. ASH2P, the promoter segment of *Bm-ASH2*; 194Em, ASH2P mutated in the E-box 188–194 bp upstream from the start codon; 797Em, ASH2P mutated in the E-box 791–797 bp upstream from the start codon; 194&797Em, ASH2P mutated in both of the E-boxes. Forks show the mutated E-box site (A). B, C, D and E are the results co-transfected of promoters and da with ASH1, ASH2, ASH3 and ase, respectively. E-boxes mutation significantly reduced the promoter activity in B, C and D ($p < 0.01$), but had no effect in E ($p > 0.05$).

identical to the proneural genes in other insects than *ac* and *sc* (Table 2). Like *l'sc*, *Bm-ASH1* is more identical to non-lepidopteran insect proneural genes than other silkworm *achaete-scute* homologs (Table 2). What's more, *l'sc* and *Bm-ASH1*, and other sole proneural genes from other insects were sorted into one clade in the phylogenetic tree (Fig. 2). The data imply that *Bm-ASH1* is the most original one in *Bombyx*. But homogeneous and phylogenetic analysis could not match each *Bombyx* proneural gene to those of *Drosophila* one by one, and phylogenetic result sorted *ac/sc* and *Bm-ASH2/Bm-ASH3* into two independent branches. So we suggest that the generations of *ac/sc* from *l'sc* and *Bm-ASH2/Bm-ASH3* from *Bm-ASH1* are two paral-

lel and independent events, that is, further duplication of proneural genes occurs after or parallel to but not before the split of Diptera and Lepidoptera during evolution.

The medfly *Ceratitis capitata*, a member of family Tephritidae, has three AS-C homolog genes *Cc-sc*, *Cc-l'sc* and *Cc-ase*. The bHLH domains of proteins coded by *Ceratitis capitata* *achaete-scute* homologs are highly conserved and display 95%, 91.5% and 90% identity with the *Drosophila* counterparts, respectively [28]. Only one AS-C homolog, *B-ASH1*, has been isolated from the Nymphalidae insect *P. coenia* [26]. *B-ASH1* protein has a surprising identity with *Bm-ASH2*, 100% within the bHLH domains and

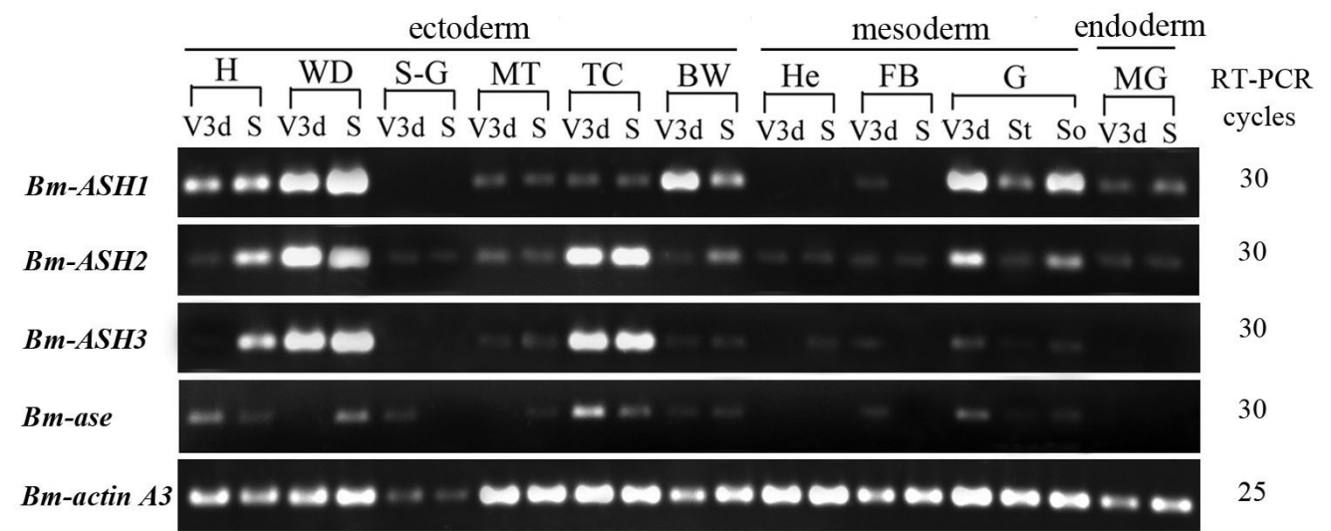


Figure 6
Tissue expression distribution of *Bm-ASH* genes in silkworm larvae. RT-PCR templates including: ectoderm tissues H (head), WD (wing disc), S-G (silk gland), MT (Malpighian tubule), TC (trachea cluster), BW (body wall); mesoderm tissues He (hemocyte), FB (fat body), G (gonad, T (testis), O (ovary)); and endoderm tissue MG (midgut). V3d stands for 3-day-old larvae of the 5th instar, and S stands for 8-day-old larvae of the 5th instar (begin spinning). Amplification cycles were 30 for *Bm-ASH1*, *Bm-ASH2*, *Bm-ASH3* and *Bm-ase*, and 25 for the internal control gene *Bm-actin A3*.

90.3% within the whole protein sequences. It is even higher than that between *Bm-ASH2* and *Bm-ASH3*, 91.3% within the bHLH domains and 49.8% within the whole protein sequences (Table 1). Moths first appeared on earth between 100 and 190 million years ago, and butter-

flies appeared about 40 million years ago, based on fossilized evidence. All above suggest that there are at least three AS-C genes in *P. coenia*, corresponding with *Bm-*

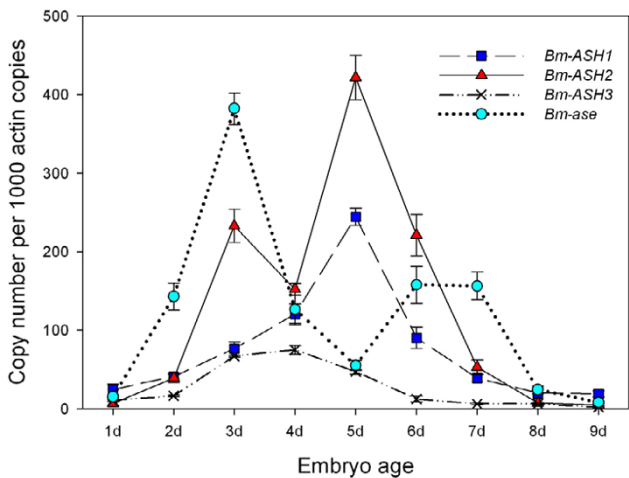


Figure 7
Developmental changes of *Bm-ASH* genes in silkworm embryo. The numerical value are copy number of ASH cDNA per 10³ *Bm-actin A3* cDNA copies. At least three independent repeats were carried out for each developmental stage.

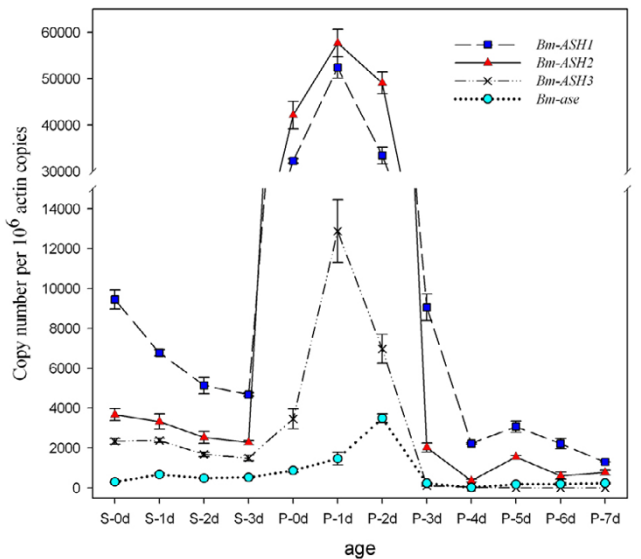


Figure 8
Developmental changes of *Bm-ASH* genes in silkworm wing disc/wing. The numerical value are copy number of ASH cDNA per 10⁶ *Bm-actin A3* cDNA copies. S0-S3 represent days after the beginning of spinning, and P0-P7 represent days after pupation. At least three independent repeats were carried out for each developmental stage.

Table 2: Homology comparison of proteins encoded by the *Drosophila* AS-C genes with some of the other insect ASH proteins.

ASH name	Percent Identity (%)		
	Dm-L'sc	Dm-Sc	Dm-Ac
Dm-L'sc	/		
Dm-Sc	73.5 (34.6)	/	
Dm-Ac	69.1 (35.8)	66.7 (33.8)	/
Ag-ASH	79.4 (43.2)	73.5 (29.0)	75.0 (37.3)
Am-ASH	72.1 (26.6)	69.6 (28.9)	66.7 (33.3)
B-ASH1	73.5 (31.9)	62.3 (25.2)	66.7 (29.9)
Bm-ASH1	74.6 (40.9)	68.7 (42.0)	68.7 (31.6)
Bm-ASH2	72.1 (31.0)	62.3 (27.2)	65.7 (28.9)
Bm-ASH3	72.1 (34.9)	58.0 (27.4)	65.2 (30.3)
Tc-ASH	70.6 (34.2)	65.2 (33.2)	63.9 (33.8)

The number in the bracket is the identity percent between two whole protein sequences, and the number before the bracket is the identity percent within the bHLH regions.

ASH1, Bm-ASH2 and Bm-ase, respectively, and Bm-ASH3 might be the most recent one among the silkworm proneural genes.

AS-C genes have a broad expression distribution in insect tissues

AS-C genes are important for the development of the nervous system, and have key roles in regulating the formation and patterning of neural precursors. They are specially expressed in most of the proneural clusters during the development of either the central (CNS) or peripheral nervous system (PNS) in arthropod, such as flies, butterflies, beetles, bees, spiders, chilopods, etc. Other functions of these genes have also been found in *Drosophila*. *l'sc* participates in the specification of muscle progenitors [21], *sc* functions in sex determination [18] and *ac* regulates the development of Malpighian tubules [17].

In the present paper, we studied the expression of Bm-ASH genes in various silkworm larval tissues using RT-PCR methods. These genes are expressed in most organs derived from all three derms, showing they might have multiple functions during silkworm development. They have higher expression levels in the head, wing disc, tracheal cluster, body wall or gonad, and all of them are expressed in the organs though lower at some developmental points. This indicates that the genes might have overlapping functions, just as in *Drosophila* [42]. Expression profiles during the development of the embryo and the pupal wing also suggest co-operation characters of Bm-ASH genes. During silkworm embryo development, neurogenesis takes place around 3 d-old, and trachea, bristle and appendage occur on 5 d and 6 d. The correspondence between the two stages and those when the two expression peaks of Bm-ASH genes occur in the

embryo (Fig. 7) suggests that these genes regulate the development of PNS and CNS. Expressions in wings of all the four genes are significantly higher on 1 d or 2 d after pupation than during other stages. Wing scale precursor cells form around the 2 d-old pupal stage [41], and our further studies on the scaleless wings mutant silkworm strongly proved the key role of Bm-ASH2 in the formation of wing scales (Zhou et al., unpublished).

Although we have known many important functions of AS-C, the analysis of the structures and evolution of these genes may suggest some of their unknown functions. We compared the protein sequences of 38 AS-C homologs from vertebrate and invertebrate. There are conserved domains besides the bHLH and C-terminal motifs, especially within vertebrates. This conservation even exists between vertebrate and invertebrate organisms. A ~20 amino acid conserved domain (corresponding to PEM-RCKRRINFAQLGYNLPQ of Asp-ASH) was found in ASH genes from vertebrates and myriapod animals *Lithobius forficatus* (Lf-ASH, Genbank: [AAT99570](#)) and *Archispirostreptus* (Asp-ASH, Genbank: [AJ536345](#)). Together with the broad expression of Bm-ASH genes in tissues outside of the nervous system, they show that this gene family has other important functions waiting for exploration.

Conclusion

In this work, we isolate and identify four *achaete-scute* homologs from *Bombyx mori*. So far, *Bombyx mori* is the second insect which has been found to have four AS-C genes. During organism evolution, genes are duplicated with conserved domains to gain more special functions. Results of phylogenetic and gene expression analysis show that during evolution, AS-C genes duplication in insects occurs after or parallel to but not before the taxonomic order formation and functions of these genes are broad during insect development.

Methods

Insects and cell culture

The silkworm stock Jingsong × Haoyue was maintained in our laboratory. The insects were reared on an artificial diet at 25°C with 70%–80% relative humidity. Bm-N cells derived from silkworm were cultured at 27°C in TC-100 insect medium containing 10% heat-inactivated (56°C, 30 min) fetal bovine serum (Invitrogen). Cell culture details were the same as Summers and Smith [43].

RNA isolation and RT-PCR

Silkworm tissues were dissected out at different stages and the total RNA was extracted with TRIZOL Reagent (Invitrogen) according to the standard protocol, and whole embryo total RNA was extracted using the acid-guanidine method [44]. One microgramme of total RNA from each sample was used to synthesize first-strand cDNA using M-

MLV Reverse Transcriptase (Promega) as the protocol described. PCR with proper program was performed using the reverse transcription product as template. Sequences of all primers used in this paper are available upon request.

Rapid amplification of cDNA ends (RACE)

One microgramme of total RNA was used for RACE cDNA synthesis (BD SMART[™] RACE cDNA Amplification Kit, Clontech), according to the user's manual. PCR was performed with primer1 and Universal Primer A Mix (UPM, Clontech), then a nest PCR was processed with primer2 and NUP using the suitable diluted former PCR product as the template. Each PCR reaction was carried out under the following conditions: one cycle of pre-denaturing for 5 min at 95°C; and 30 cycles of 94°C for 40 s, 60°C for 40 s, 72°C for 3 min, then followed by 10 min incubation at 72°C.

Database blast, protein sequences alignment and phylogenetic analysis

We used the amino acid sequence coded by *Drosophila achaete* (Genbank: [AAF45498](#)) to blast the silkworm EST database with the blastx program on the NCBI web site [45], by limiting the organism with "*Bombyx mori*". As formerly described [46], insect ASH protein sequences were aligned with CLUSTALX [47] and revised manually with Gendoc software. Then a neighbor-joining (NJ) tree based on amino acid sequences was constructed using the PHYLIP software package (100 bootstrap replicates) [48].

Dual-Luciferase Reporter Assay

Promoter segments were cloned into Luciferase Reporter Vector pGL3-Basic separately, and the ORF region of silkworm ASH and *Drosophila da* (GenBank: [Y00221](#)) genes were cloned into the modified pBacPAK8 vector with an *IE1* promoter and a *hr3* enhancer [40]. Then the plasmids

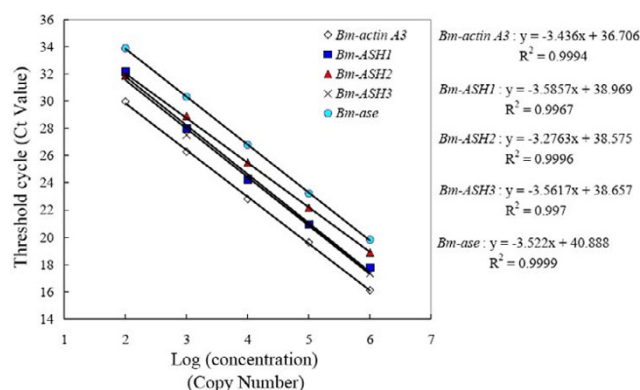


Figure 10

Standard curves of the Quantitative real-time PCR.

Standard curves were constructed using serial dilutions of the ORF segments of the genes recombined into pMD18-T vectors. The log ranges of the standard curves are from 10⁶ to 10² copies. Threshold cycles of each standard dilution point were used to generate the standard curve for each gene. Linear equations corresponding to each standard curve are given, and R² for each standard curve is more than 0.99.

were transfected into Bm-N cells as described formerly [49]. 0.1 µg of pRL-CMV Vector was co-transfected as an internal control reporter for each transfection. After incubating for 48 hours, the cells were collected by centrifugation at 10,000 rpm for 1 min at 4°C. Then the cell lysates were prepared using the passive lysis buffer, and 10 µg of each lysate was used for the dual-luciferase reporter assay according to the protocol (Dual-Luciferase[®] Reporter [DLR[™]] Assay System, Promega). Firefly luciferase activity and Renilla luciferase activity were determined with 20/20ⁿ Luminometer (Turner BioSystems, Inc., USA). Each treatment was repeated at least three times.

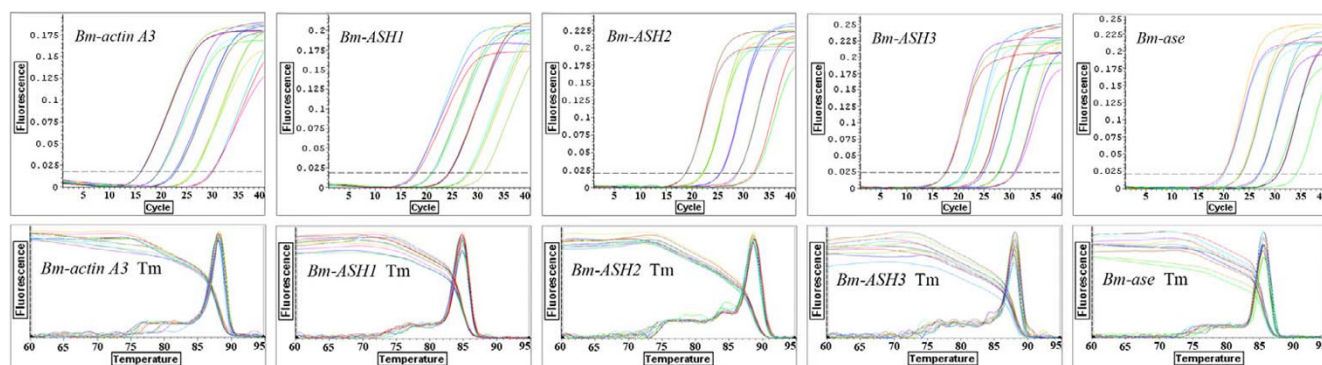


Figure 9

The data curves (upper) and melting curves (lower) of Quantitative real-time PCR for *Bm-actin A3* and *Bm-ASH* genes. These are the curves of amplifications for standard curve making. The plots show that the repeatability and specification of the Q-PCR are good.

Introduction of point mutation

Primers P-F and P-R were designed at the terminals of the target segment sequence. Reversed primers m-R and m-F with the mutated bases were designed around the site where the point mutation would be introduced. PCRs were carried out with P-F pairing m-R or m-F pairing P-R. After purification, the two PCR products were mixed, and denatured, renatured and extended for three cycles without any primers. Three cycles after running, P-F and P-R were added and the PCR was continued for 30 cycles of amplification. All of the PCRs were processed with *pfu* DNA polymerase.

Quantitative real-time PCR

Q-PCR was used to determine the changes of silkworm *ASH* genes expression during embryo development and wing development. Primers were designed based on the cDNA sequence and a segment around 200 bp would be specially amplified for each gene. The housekeeping gene *Bm-actin A3* was used as the internal control. A 20 µl volume containing cDNA produced from about 10 ng of total RNA, 5 pmol of each primer, and 10 µl of SYBR Green Realtime PCR Master Mix (Toyobo Co., Ltd., Japan) was used for each PCR reaction. Then the PCR was processed on a Chromo4 Four-Color Real-Time System (Bio-Rad [formerly MJ Research]) under the following program: one cycle of 95°C for 3 min; then 40 cycles of 95°C for 15 sec, 60°C for 15 sec and 72°C for 30 sec. The melting curve was established from 60°C to 95°C. Three independent repeats were carried out for each reaction. Threshold cycle values were used for the further analysis.

Standard curves were constructed using serial dilutions of the ORF segments of the genes recombined into pMD18-T vectors (Takara, Japan). The log ranges of the standard curves were from 10⁶ to 10² copies. The data curve and the melting curve showed the reliability and specificity of the PCR product (Fig. 9). Threshold cycles of each standard dilution point were used to generate a reliable standard curve for each gene (Fig. 10). Linear equations corresponding to each standard curve were made, and R² for each standard curve was more than 0.99. This showed that the linearity of the standard curves was good.

Theoretic copy of each sample was calculated with the linear equation for each gene, and trendlines for *Bombyx ASH* genes during the development course of silkworm embryo and pupal wing were constructed.

Authors' contributions

ZQX carried out most of the work and wrote the paper. ZTY isolated *Bm-ASH1* and helped write the paper. YLL took part in RT-PCR and helped analyzing the data. YYZ cultured the cells. XWH and ZZF conceived the project

and draft the manuscript. All authors read and approved the final manuscript.

Acknowledgements

The *Drosophila daughterless* cDNA used in the experiment was presented by Dr. Karen L. Schulze in Prof. Hugo J. Bellen's lab at Baylor College of Medicine. This work was supported by financial grants from the National High Technology Research and Development Program of China ("863" Project No. 2006AA10A119) and the National Natural Sciences Foundation of China (30770279). We thank Ms. Zhenzhen Yang for the language editing of the manuscript.

References

1. Jan YN, Jan LY: **HLH proteins, fly neurogenesis, and vertebrate myogenesis.** *Cell* 1993, **75**:827-830.
2. Weintraub H: **The MyoD family and myogenesis: redundancy, networks, and thresholds.** *Cell* 1993, **75**:1241-1244.
3. Hassan BA, Bellen HJ: **Doing the MATH: is the mouse a good model for fly development?** *Genes Dev* 2000, **14**:1852-1865.
4. Massari ME, Murre C: **Helix-loop-helix proteins: regulators of transcription in eucaryotic organisms.** *Mol Cell Biol* 2000, **20**:429-440.
5. Ledent V, Paquet Q, Vervoort M: **Phylogenetic analysis of the human basic helix-loop-helix proteins.** *Genome Biol* 2002, **3**(6):research0030.0031.
6. Cubas P, de Celis J, Campuzano S, Modolell J: **Proneural clusters of achaete-scute expression and the generation of sensory organs in the Drosophila imaginal wing disc.** *Genes Dev* 1991, **5**:996-1008.
7. Skeath J, Carroll SB: **Regulation of achaete-scute gene expression and sensory organ pattern formation in the Drosophila wing.** *Genes Dev* 1991, **5**:984-995.
8. Jan YN, Jan LY: **Genetic control of cell fate specification in Drosophila peripheral nervous system.** *Annu Rev Genet* 1994, **28**:373-393.
9. Calleja M, Renaud O, Usui K, Pistillo D, Morata G, Simpson P: **How to pattern an epithelium: lessons from achaete-scute regulation on the notum of Drosophila.** *Gene* 2002, **292**:1-12.
10. Cabrera CV, Alonso MC: **Transcriptional activation by heterodimers of the achaete-scute and daughterless gene products of Drosophila.** *EMBO J* 1991, **10**:2965-2973.
11. Pi H, Huang SK, Tang CY, Sun H, Chien CT: **phyllopod is a target gene of proneural proteins in Drosophila external sensory organ development.** *Proc Natl Acad Sci USA* 2004, **101**:8378-8383.
12. Van Doren M, Powell PA, Pasternak D, Singson A, Posakony JW: **Spatial regulation of proneural gene activity: auto- and cross-activation of achaete is antagonized by extramacrochaetae.** *Genes Dev* 1992, **6**:2592-2605.
13. Campuzano S, Modolell J: **Patterning of the Drosophila nervous system: the achaete-scute gene complex.** *Trends Genet* 1992, **8**:202-208.
14. Fichelson P, Gho M: **The glial cell undergoes apoptosis in the microchaete lineage of Drosophila.** *Development* 2003, **130**:123-133.
15. Grens A, Mason E, Marsh JL, Bode HR: **Evolutionary conservation of a cell fate specification gene: the Hydra achaete-scute homolog has proneural activity in Drosophila.** *Development* 1995, **121**:4027-4035.
16. Wheeler SR, Carrico ML, Wilson BA, Brown SJ, Skeath JB: **The expression and function of the achaete-scute genes in Tribolium castaneum reveals conservation and variation in neural pattern formation and cell fate specification.** *Development* 2003, **130**:4373-4381.
17. Hoch M, Broadie K, Jackle H, Skaer H: **Sequential fates in a single cell are established by the neurogenic cascade in the Malpighian tubules of Drosophila.** *Development* 1994, **120**:3439-3450.
18. Parkhurst SM, Lipshitz HD, Ish-Horowicz D: **achaete-scute feminizing activities and Drosophila sex determination.** *Development* 1993, **117**:737-749.
19. Deshpande G, Stuke J, Schedl P: **scute (sis-b) function in Drosophila sex determination.** *Mol Cell Biol* 1995, **15**:4430-4440.

20. Wrischnik LA, Timmer JR, Megna LA, Cline TW: **Recruitment of the proneural gene scute to the *Drosophila* sex-determination pathway.** *Genetics* 2003, **165**:2007-2027.
21. Carmona A, Bate M, Jimenez F: **lethal of scute, aproneural gene, participates in the specification of muscle progenitors during *Drosophila* embryogenesis.** *Genes Dev* 1995, **9**:2373-2383.
22. Alonso MC, Cabrera CV: **The *achaete-scute* gene complex of *Drosophila melanogaster* comprises four homologous genes.** *EMBO J* 1988, **7**:2585-2591.
23. Johnson JE, Birren SJ, Anderson DJ: **Two rat homologues of *Drosophila* *achaete-scute* specifically expressed in neuronal precursors.** *Nature* 1990, **346**:858-861.
24. Jasoni CL, Walker MB, Morris MD, Reh TA: **A chicken *achaete-scute* homolog (*CASH-1*) is expressed in a temporally and spatially discrete manner in the developing nervous system.** *Development* 1994, **120**:769-783.
25. Botella LM, Donoro C, Schvez L, Segarra C, Granadino B: **Cloning and Characterization of the *scute* (*sc*) Gene of *Drosophila subobscura*.** *Genetics* 1996, **144**:1043-1051.
26. Galant R, Skeath JB, Paddock S, Lewis DL, Carroll SB: **Expression pattern of a butterfly *achaete-scute* homolog reveals the homology of butterfly wing scales and insect sensory bristles.** *Curr Biol* 1998, **8**:807-813.
27. Persson P, Jogi A, Grynfeld A, Pahlman S, Axelsson H: ***HASH-1* and *E2-2* Are Expressed in Human Neuroblastoma Cells and Form a Functional Complex.** *Biochem Biophys Res Commun* 2000, **274**:22-31.
28. Wülbeck C, Simpson P: **Expression of *achaete-scute* homologues in discrete proneural clusters on the developing notum of the medfly *Ceratitis capitata*, suggests a common origin for the stereotyped bristle patterns of higher Diptera.** *Development* 2000, **127**:1411-1420.
29. Pistillo D, Skaer N, Simpson P: ***scute* expression in *Calliphora vicina* reveals an ancestral pattern of longitudinal stripes on the thorax of higher Diptera.** *Development* 2002, **129**:563-572.
30. Skaer N, Pistillo D, Gibert JM, Lio P, Wülbeck C, Simpson P: **Gene duplication at the *achaete-scute* complex and morphological complexity of the peripheral nervous system in Diptera.** *Trends in Genetics* 2002, **18**:399-405.
31. Wülbeck C, Simpson P: **The expression of *pannier* and *achaete-scute* homologues in a mosquito suggests an ancient role of *pannier* as a selector gene in the regulation of the dorsal body pattern.** *Development* 2002, **129**:3861-3871.
32. Jonsson M, Mark EB, Brantsing C, Brandner JM, Lindahl A, Asp J: ***Hash4*, a novel human *achaete-scute* homologue found in fetal skin.** *Genomics* 2004, **84**:859-866.
33. Seipel K, Yanze N, Schmid V: **Developmental and evolutionary aspects of the basic helix-loop-helix transcription factors *Atonal*-like1 and *Achaete-scute* homolog2 in the jellyfish.** *Dev Biol* 2004, **269**:331-345.
34. Schlatter R, Maier D: **The *Enhancer of split* and *Achaete-Scute* complexes of *Drosophilids* derived from simple ur-complexes preserved in mosquito and honeybee.** *BMC Evol Biol* 2005, **5**:67.
35. Xia Q, Zhou Z, Lu C, Cheng D, Dai F, Li B, Zhao P, Zha X, Cheng T, Chai C, Pan G, Xu J, Liu C, Lin Y, Qian J, Hou Y, Wu Z, Li G, Pan M, Li C, Shen Y, Lan X, Yuan L, Li T, Xu H, Yang G, Wan Y, Zhu Y, Yu M, Shen W, Wu D, Xiang Z, Yu J, Wang J, Li R, Shi J, Li H, Li G, Su J, Wang X, Li G, Zhang Z, Wu Q, Li J, Zhang Q, Wei N, Xu J, Sun H, Dong L, Liu D, Zhao S, Zhao X, Meng Q, Lan F, Huang X, Li Y, Fang L, Li C, Li D, Sun Y, Zhang Z, Yang Z, Huang Y, Xi Y, Qi Q, He D, Huang H, Zhang X, Wang Z, Li W, Cao Y, Yu Y, Yu H, Li J, Ye J, Chen H, Zhou Y, Liu B, Wang J, Ye J, Ji H, Li S, Ni P, Zhang J, Zhang Y, Zheng H, Mao B, Wang W, Ye C, Li S, Wang J, Wong GK, Yang H, Biology Analysis Group: **A draft sequence for the genome of the domesticated silkworm (*Bombyx mori*).** *Science* 2004, **306**(5703):1937-1940.
36. Rogers S, Wells R, Rechsteiner M: **Amino acid sequences common to rapidly degraded proteins: the PEST hypothesis.** *Science* 1986, **234**:364-368.
37. González F, Romani S, Cubas P, Modolell J, Campuzano S: **Molecular analysis of the *asene* gene, a member of the *achaete-scute* complex of *Drosophila melanogaster*, and its novel role in optic lobe development.** *EMBO J* 1989, **8**:3553-3562.
38. Hinz U, Giebel B, Campos-Ortega JA: **The basic-helix-loop-helix domain of *Drosophila* *lethal of scute* protein is sufficient for proneural function and activates neurogenic genes.** *Cell* 1994, **76**:77-87.
39. Wang J, Xia Q, He X, Dai M, Ruan J, Chen J, Yu G, Yuan H, Hu Y, Li R, Feng T, Ye C, Lu C, Wang J, Li S, Wong GK, Yang H, Wang J, Xiang Z, Zhou Z, Yu J: **SilkDB: a knowledgebase for silkworm biology and genomics.** *Nucleic Acids Research* 2005, **33**:D399-D402.
40. Chen Y, Yao B, Zhu Z, Yi Y, Lin X, Zhang Z, Shen G: **A constitutive super-enhancer: homologous region 3 of *Bombyx mori* nucleopolyhedrovirus.** *Biochem Biophys Res Commun* 2004, **318**:1039-1044.
41. Zhou Q, Li Y, Shen X, Yi Y, Zhang Y, Zhang Z: **The scaleless wings mutant in *Bombyx mori* is associated with a lack of scale precursor cell differentiation followed by excessive apoptosis.** *Dev Genes Evol* 2006, **216**:721-726.
42. Marcellini S, Gibert JM, Simpson P: ***achaete*, but not *scute*, is dispensable for the peripheral nervous system of *Drosophila*.** *Dev Biol* 2005, **285**:545-553.
43. Summers M, Smith G: **A Manual of Methods for Baculovirus Vectors and Insect Cell Culture Procedures.** *Texas Agricultural Experiment Station bulletin* 1987, **1555**.
44. Chomczynski P, Sacchi N: **Single-step method of RNA isolation by acid guanidinium thiocyanate-phenol-chloroform extraction.** *Anal Biochem* 1987, **162**:156-159.
45. NCBI/BLAST/blastx [http://www.ncbi.nlm.nih.gov/blast.cgi?PAGE=Translations&PROGRAM=blastx&PAGE_TYPE=blastx&SHOW_DEFAULTS=on]
46. Xia A, Zhou Q, Yu L, Li W, Yi Y, Zhang Y, Zhang Z: **Identification and analysis of *YELLOW* protein family genes in the silkworm, *Bombyx mori*.** *BMC Genomics* 2006, **7**:195.
47. Jeanmougin F, Thompson JD, Gouy M, Higgins DG, Gibson TJ: **Multiple sequence alignment with ClustalX.** *Trends Biochem Sci* 1998, **23**:403-405.
48. Felsenstein J: **PHYLP: Phylogenetic inference package.** In version 3.6 Washington: Department of Genome Sciences, University of Washington; 2002.
49. Zhou Y, Xiao Q, Zhang Z, He J, Zhang Y: **Foreign insect hormones stimulating the transcription of the *ie-1* promoter of *Bombyx mori* nuclear polyhedrosis virus in vivo and in vitro.** *Biosci Biotechnol Biochem* 2002, **66**:1488-1494.

Publish with **BioMed Central** and every scientist can read your work free of charge

"BioMed Central will be the most significant development for disseminating the results of biomedical research in our lifetime."

Sir Paul Nurse, Cancer Research UK

Your research papers will be:

- available free of charge to the entire biomedical community
- peer reviewed and published immediately upon acceptance
- cited in PubMed and archived on PubMed Central
- yours — you keep the copyright

Submit your manuscript here:
http://www.biomedcentral.com/info/publishing_adv.asp

